

KEB-DRIVE



Frequency Inverter KEB COMBIVERT F5

The new F5 KEB-frequency inverter generation combines versatility and easy handling.

F5 BASIC

A reliable frequency inverter for standard applications.

F5 COMPACT

An inverter offering maximum versatility with enhanced programming facilities and compatability with bus protocols. A must have for the design of high quality machines.

F5 MULTI

Field oriented frequency inverter for synchronous and asynchronous motors with pluggable feedback modules for

- Resolver
- Incremental encoder
- Absolute encoder
- Hiperface® and EnDat®

F5 APPLICATION

Bespoke solutions optimized for specific requirements.

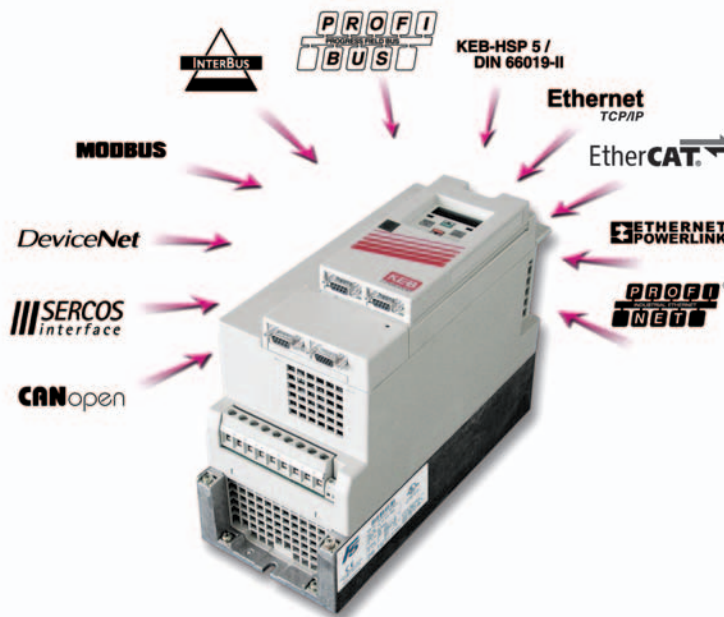
For example:

- Industry specific software and hardware
- Alternative cooling systems



Selection Table 400 V 3ph

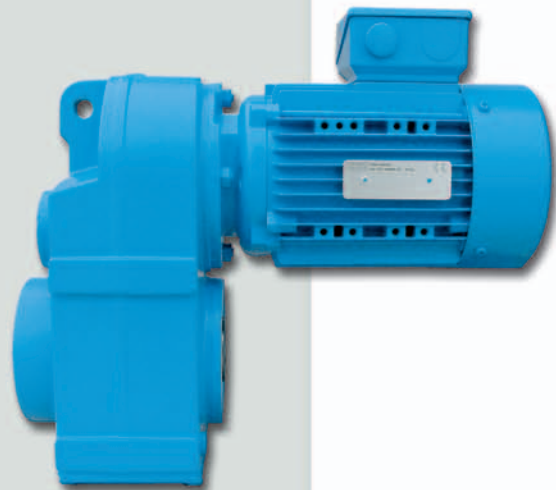
Pn [kW] 400V 3ph	In [A]	Option Filter EN55011	Housing size		
			BASIC	COMPACT	MULTI
0.37	1.3	A/B	A/B	B	-
0.75	2.6	A/B	A/B	B	D
1.5	4.1	A/B	A/B	B	D
2.2	5.8	B	B	B	D
4	9.5	B	B	B	D
5.5	12	B	D	D	D
7.5	16.5	B	D	D	D
11	24	B	E	E	E
15	33	B	E	E	E
18.5	42	B	G	G	G
22	50	B	H	G	G
30	60	B	H	H	H
37	75	B	-	H	H
45	90	B	-	R	R
55	115	B	-	R	R
75	150	B	-	R	R
90	180	A/B	-	R	R
110	210	A/B	-	U	U
132	250	A/B	-	U	U
160	300	A/B	-	U	U
200	370	A	-	W	W
250	460	A	-	W	W
315	570	A	-	W	W



KEB Geared Motors

The KEB geared motor range is continuously being expanded and developed to meet customers requirements and to provide best stability, safety and reliability.

- Design and manufacturing incorporating the latest technology.
- The motor options cover encoder feedback, forced ventilation, mechanical brakes and thermal protection.
- In addition to the standard options the geared motors can be tailored to your specific requirements.

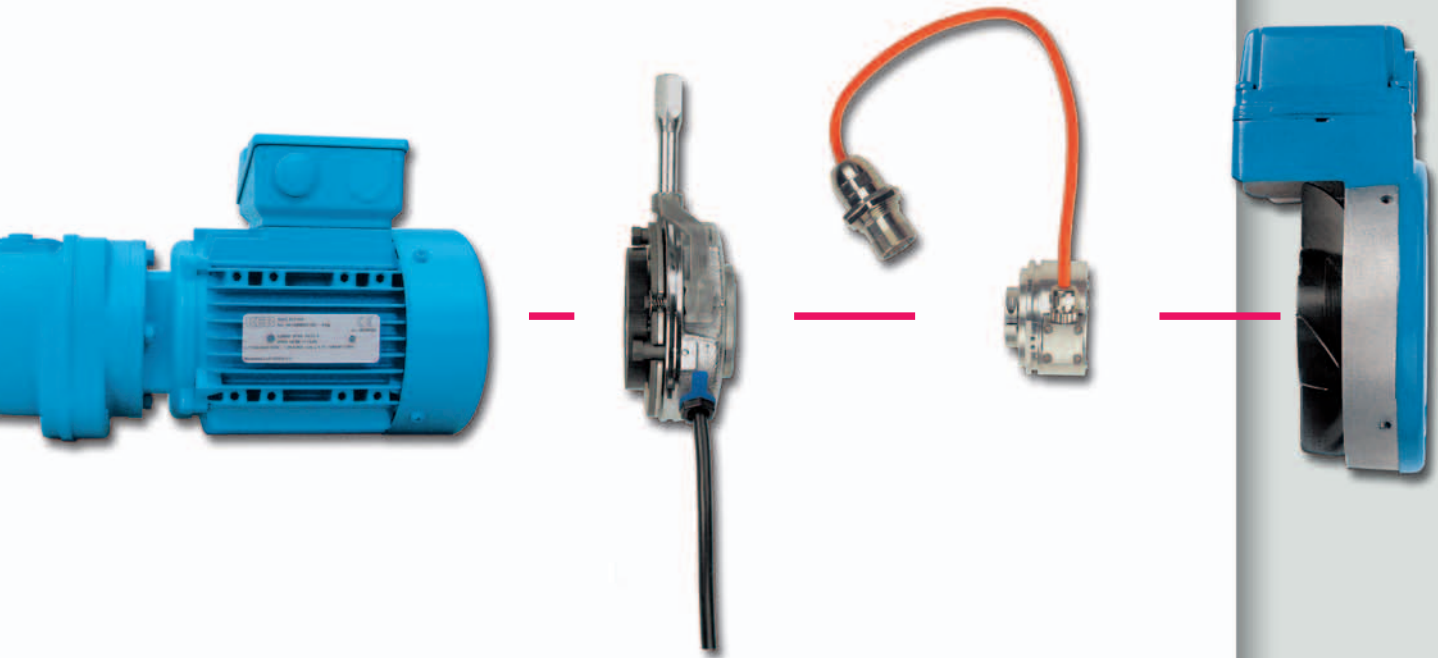


Helical Geared Motors G

Gear	Mn [Nm]	i	kW	Output Shaft
G0	60	3.46-72.52	0.75	Ø20x40
G1	117	3.37-115.34	1.5	Ø20x40
G2	235	3.49-153.41	3	Ø25x50
G3	480	3.56-177.27	5.5	Ø30x60
G4	875	3.61-210.05	11	Ø40x80
G5	1630	3.85-186.77	18.5	Ø50x100
G6	2800	3.96-221.95	22	Ø60x120
G7	4880	4.34-250.97	30	Ø75x140
G8	8900	5.92-186.96	45	Ø90x170

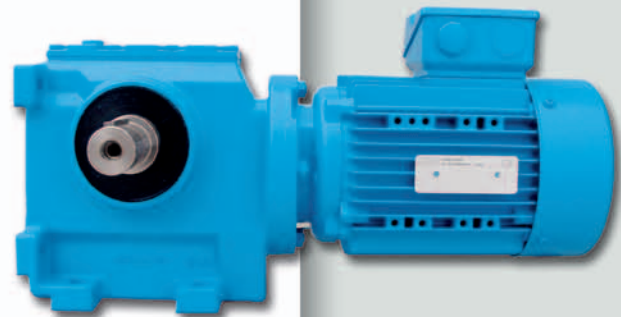
Shaft Mounted Helical Geared Motors F

Gear	Mn [Nm]	i	kW	Hollow Shaft
F3	470	3.70-190.26	4	Ø30
F4	885	3.20-235.25	7.5	Ø40
F5	1580	3.80-205.64	15	Ø50
F6	2800	4.08-242.53	22	Ø60
F7	4880	4.32-274.23	30	Ø70



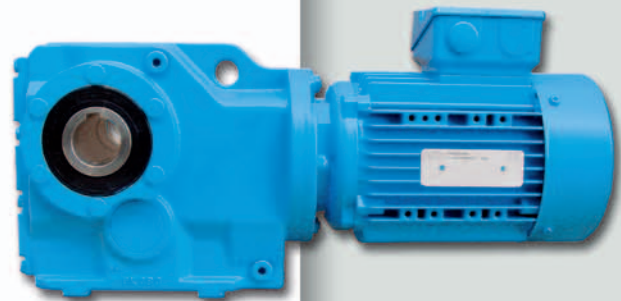
Helical-Worm Geared Motors S

Gear	Mn [Nm]	i	kW	Hollow Shaft
S0	55	5.09-189	0,75	Ø20
S1	162	7.00-168.00	1.5	Ø25
S2	295	6.85-207.20	3	Ø30
S3	540	7.25-271.60	4	Ø40
S4	1160	7.70-247.58	7.5	Ø50



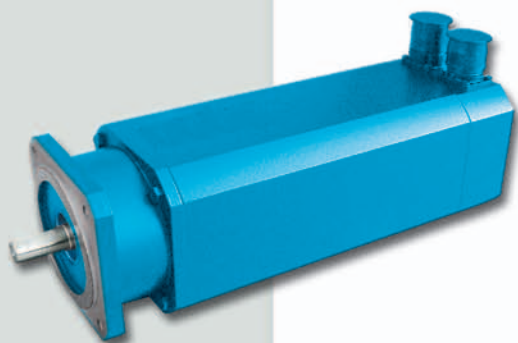
Helical-Bevel Geared Motors K

Gear	Mn [Nm]	i	kW	Hollow Shaft
K3	400	5.14-120.13	4	Ø30
K4	745	5.16-151.92	7.5	Ø40
K5	1430	5.69-138.94	15	Ø50
K6	2550	6.35-160.53	22	Ø60
K7	4330	7.29-183.21	30	Ø70
K8	7960	8.11-144.68	45	Ø90



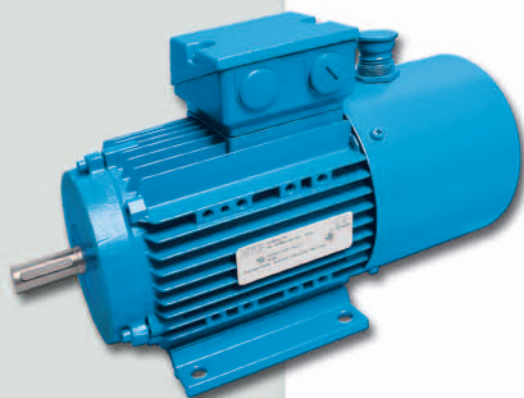
KEB Servo Motors

Synchronous Servo Motors TA



Motors	n [1/min]	Mn [Nm]	F5-MULTI Size	Brake COMBIPERM [Nm]
TA21	4000	0.5	07	2
TA22	4000	1.0	09	2
TA31	3000	1.0	07	4.5
TA32	3000	2.0	09	4.5
TA33	3000	3.0	10	4.5
TA41	3000	4.0	12	9
TA42	3000	5.5	12	9
TA43	3000	7.0	13	9
TA51	3000	7.0	13	18
TA52	3000	10.5	14	18
TA53	3000	14	15	18
TA61	3000	20	16	36
TA62	3000	30	18	36
TA63	3000	40	18	36

Asynchronous Servo Motors DL/DA

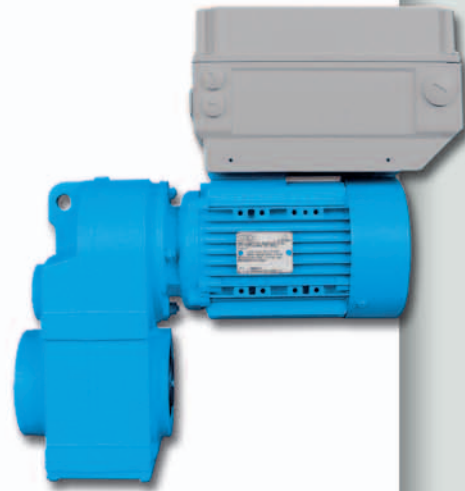


Motors	n [1/min]	Mn [Nm]	F5-MULTI Size	Brake COMBISTOP [Nm]
DL63K4	1410	0.8	07	5
DL63G4	1410	1.2	07	5
DL71K4	1385	1.7	07	5
DL71G4	1380	2.5	07	5
DL80K4	1410	3.7	07	10
DL80G4	1400	5.1	09	10
DL90S4	1420	7.3	09	20
DL90L4	1405	10.1	10	20
DL100L4	1415	14.8	12	36
DL100LX4	1430	20.0	13	36
DL112M4	1435	26.6	14	70
DA132S4	1450	36.2	15	100
DA132M4	1450	49.3	15	100
DA160MS4	1470	59.7	16	150
DA160M4	1470	71.4	16	150
DA160L4	1470	97.4	17	250
DA180M4	1475	119.7	19	250
DA180L4	1475	142.4	20	500
DA200L4	1475	194.2	21	500

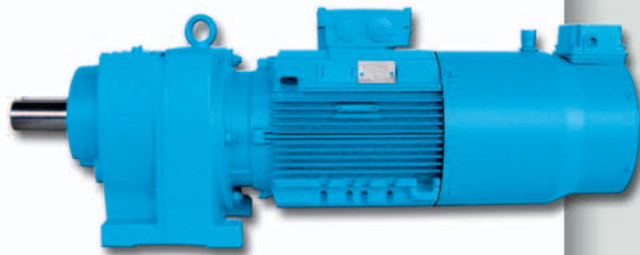
Drive Systems

KEB frequency inverters and geared motors are perfectly matched. Various drive systems are available, to solve even the most demanding applications.

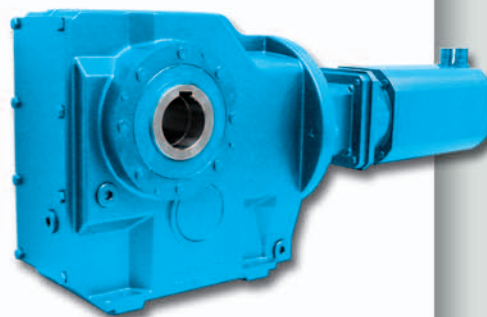
The KEB inverter-motor combination offers advanced speed control without the need of a control cabinet.



KEB asynchronous-servo systems are supplied as complete package including cables and accessories. With the pre-programmed system it is simple to commission the drive.



The flexibility of the geared motor program helps the designer to incorporate servo drives perfectly into his machine.



people in motion

Addresses

Germany	Manufacturing Plant	Karl. E. Brinkmann GmbH Frequency inverters Fösterweg 36-38 Couplings, Brakes D-32683 Barntrup	Tel.: +49 (0) 5263 401-0 Fax: +49 (0) 5263 401-116 E-mail: info@keb.de
	Manufacturing Plant	KEB Antriebstechnik GmbH Geared motors Wildbacher Straße 5 Gear units D-08289 Schneeberg	Tel.: +49 (0) 3772 670 Fax: +49 (0) 3772 67281 E-mail: info@keb-combidrive.de
France	Sales Service	Société Française KEB Z.I. de la Croix St. Nicolas 14, rue Gustave Eiffel F - 94510 LA QUEUE EN BRIE	Tel.: +33 (0) 1 49620101 Fax: +33 (0) 1 45767495 E-mail: info@keb.fr
Great Britain	Sales Service	KEB(UK) Ltd. 6 Chieftain Business Park Morris Close Park Farm, Wellingborough GB - Northants, NN8 6 XF	Tel.: +44 (0) 1933 402220 Fax: +44 (0) 1933 400724 E-mail: info@keb-uk.co.uk
Italy	Sales Service	KEB Italia S.r.l. Via Newton, 2 I - 20019 Settimo Milanese (Milano)	Tel.: +39 02 33500782 Fax: +39 02 33500790 E-mail: info@keb.it
Austria	Sales Service	KEB Antriebstechnik Austria GmbH Ritzstraße 8 A - 4614 Marchtrenk	Tel.: +43 (0) 7243 53586-0 Fax: +43 (0) 7243 53586-21 E-mail: info@keb.at
Japan	Sales Service	KEB - YAMAKYU Ltd. 15 - 16, 2 - Chome Takanawa Minato-ku J - Tokyo 108-0074	Tel.: +81 (0) 33 445 8515 Fax: +81 (0) 33 445 8215 E-mail: info@keb.jp
China	Sales Service	KEB Power Transmission Technology Co. Ltd. Room 401, No 665 North Songwei Road Song Jiang District CHN 201613 Shanghai	Tel.: +86 (0) 21 51 09 59 95 Fax: +86 (0) 21 54 45 01 15 E-mail: info@keb.cn
USA	Sales Service	KEB America Inc. 5100 Valley Industrial Blvd. South USA - Shakopee, MN 55379	Tel.: +1 (0) 952 224 1400 Fax: +1 (0) 952 224 1499 E-mail: info@kebamerica.com

More Addresses: see www.keb.de

